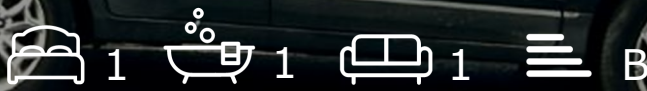




Flat 4, Clouds Hill Court, 69 Clouds Hill Road

St George, Bristol, BS5 7LE

Asking price £185,000



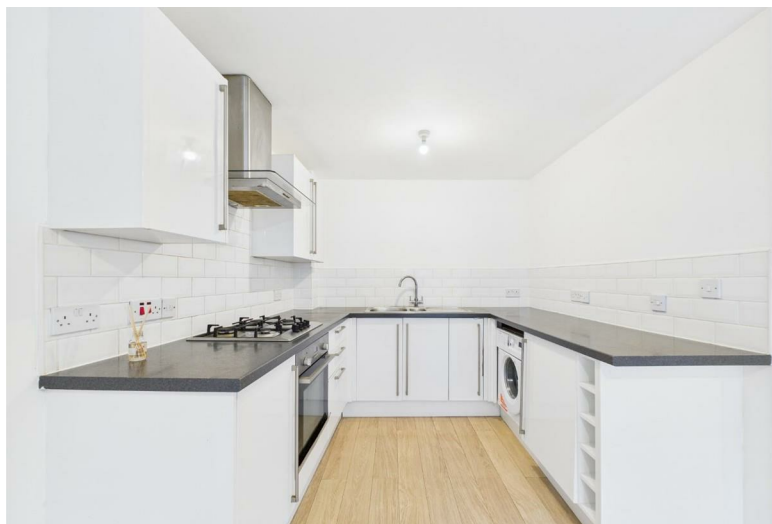
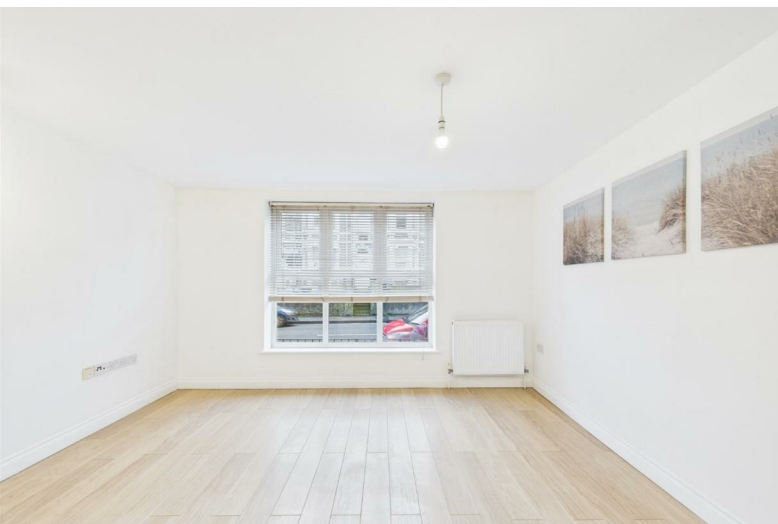
1

1

1

B

Flat 4, Clouds Hill Court, 69 Clouds Hill Road



Description

This spacious modern style flat boasts a great size modern open-plan living space and is set a short stroll away from St George Park.

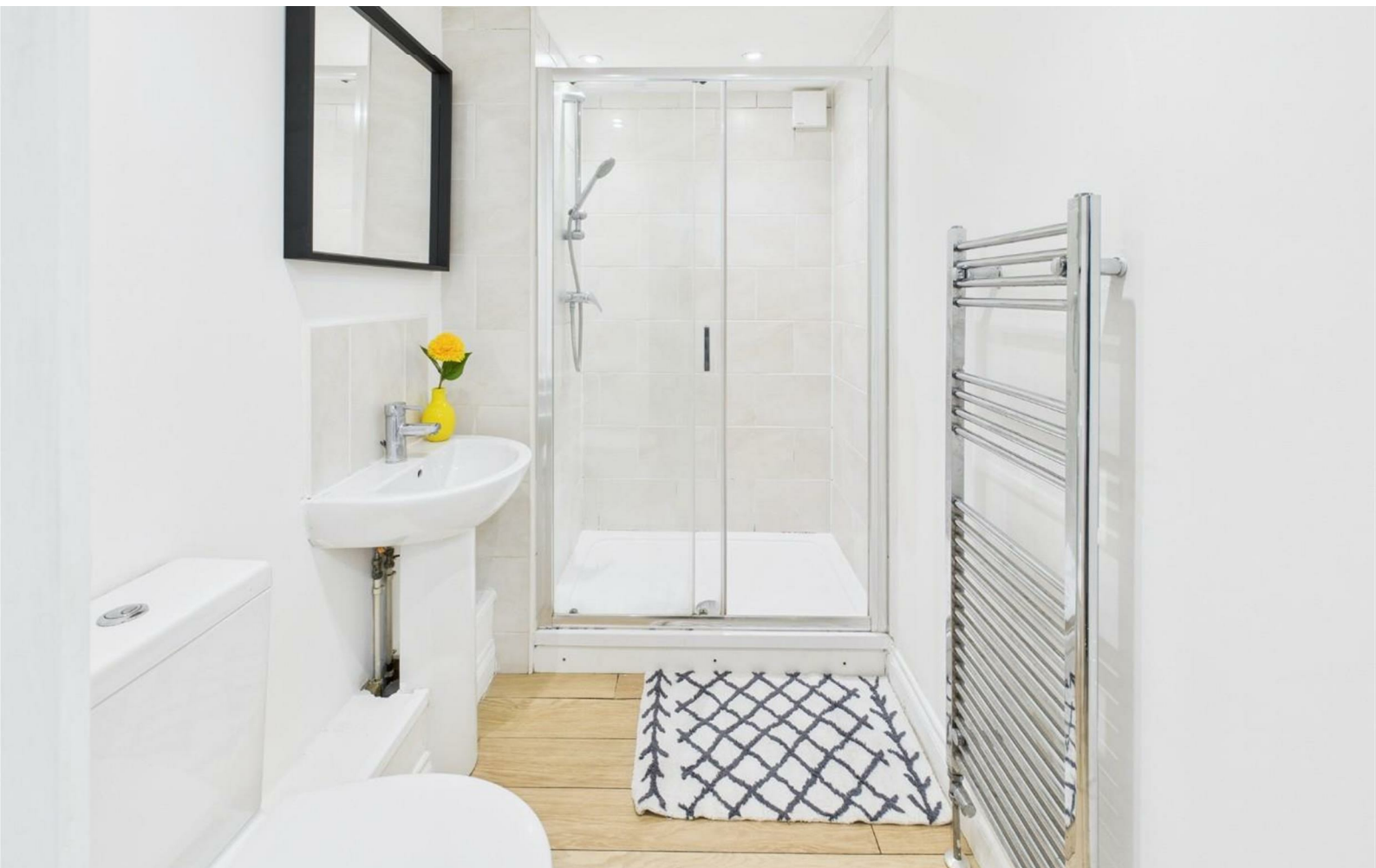
With the Orchard Cafe close by along with Church Road's selection of cafes, bars and delicatessens this is great for a first time buyer looking for a first home.

The hall floor flat briefly comprises inner hallway leading to an open plan lounge / dining room and an open plan modern kitchen. There is a larger than average double bedroom with a walk-in wardrobe, plus a lovely shower room with a double shower cubicle as well.

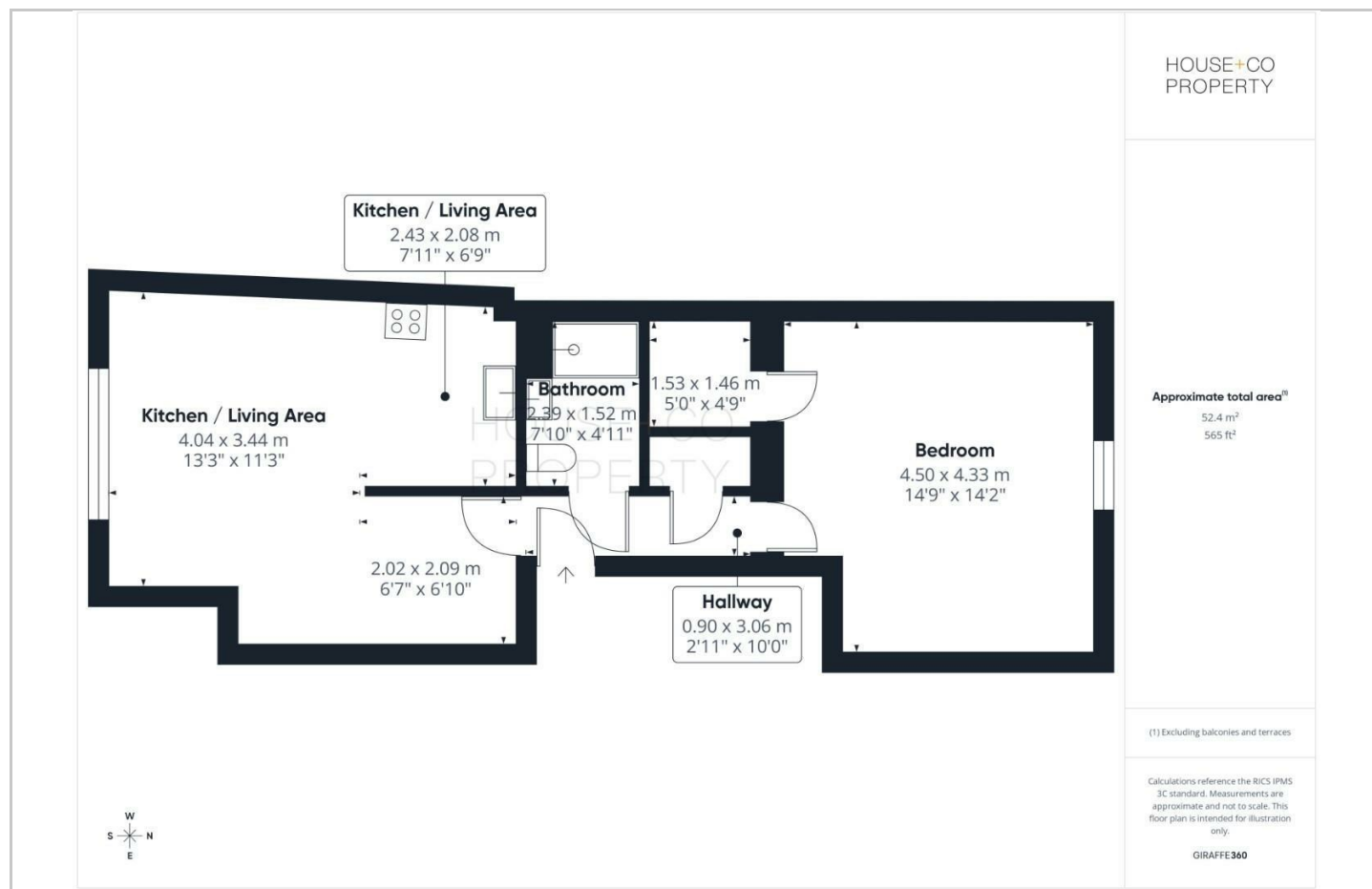
Set up on the remains of a 999 year lease (990 years approx remain), we are advised that the annual management fees are only £1465 per annum and there is no ground rent.

- SPACIOUS HALL FLOOR FLAT
- WALK IN WARDROBE
- MODERN KITCHEN
- GAS CENTRAL HEATING AND DOUBLE GLAZING
- EASY ACCESS TO THE CITY
- GREAT SIZE DOUBLE BEDROOM
- OPEN-PLAN LIVING
- SHOWER ROOM WITH DOUBLE SHOWER
- CLOSE TO ST GEORGE PARK
- NO ONWARD CHAIN WORRIES

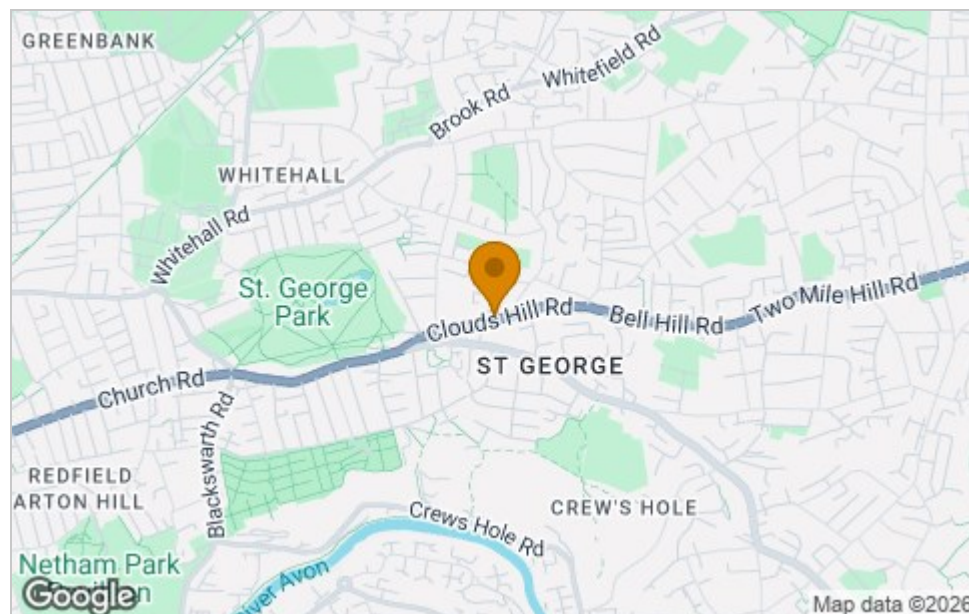




Floor Plan



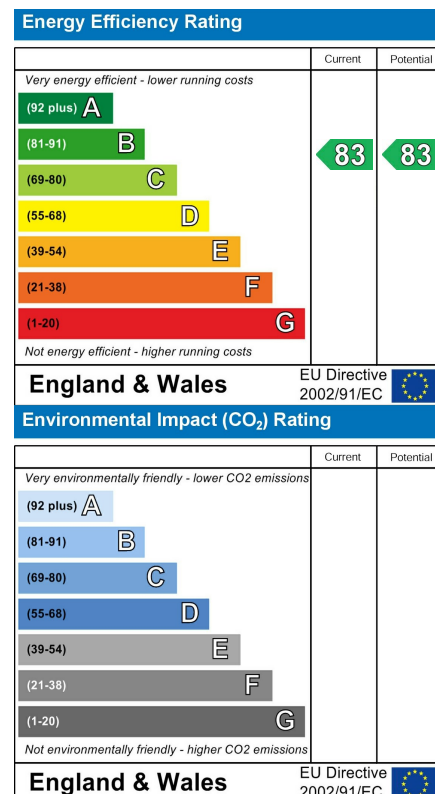
Area Map



Viewing

Please contact our House + Co Property (Sales) Office on 0117 907 0020 if you wish to arrange a viewing appointment for this property or require further information.

Energy Efficiency Graph



These particulars, whilst believed to be accurate are set out as a general outline only for guidance and do not constitute any part of an offer or contract. Intending purchasers should not rely on them as statements of representation of fact, but must satisfy themselves by inspection or otherwise as to their accuracy. No person in this firm's employment has the authority to make or give any representation or warranty in respect of the property.